

?PATHWAYS

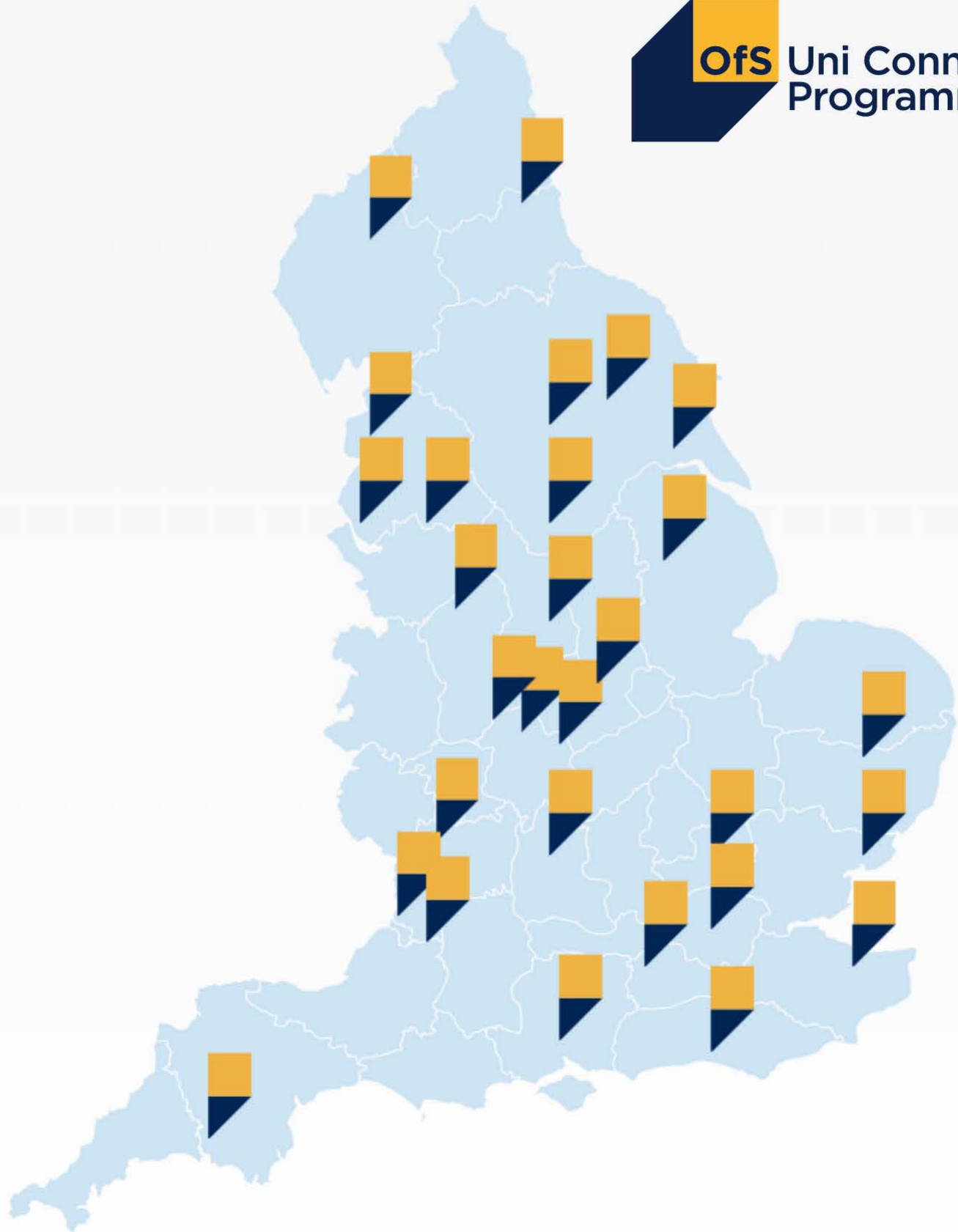
Inspire the
Possible



pathwaystohe.ac.uk

reach@le.ac.uk

Inspire the Possible



Video Objectives



Are you at school or college and thinking about higher education?

Video Objectives



Do you have a medical condition, special educational need or a disability?

Video Objectives



Would you like to know whether there'll be support to help you with your higher education studies, and how to access this?

What support is available?

Help and support is available for
lots of students including those who
have a:



What support is available?

Help and support is available for lots of students including those who have a:

- Specific learning difficulty



What support is available?

Help and support is available for lots of students including those who have a:

- Specific learning difficulty
- Long term health condition



What support is available?

Help and support is available for lots of students including those who have a:

- Specific learning difficulty
- Long term health condition
- Autism spectrum condition



What support is available?

Help and support is available for lots of students including those who have a:

- Specific learning difficulty
- Long term health condition
- Autism spectrum condition
- Visual impairment



What support is available?

Help and support is available for lots of students including those who have a:

- Specific learning difficulty
- Long term health condition
- Autism spectrum condition
- Visual impairment
- Hearing impairment



What support is available?

Help and support is available for lots of students including those who have a:

- Mental health conditions



What support is available?

Help and support is available for lots of students including those who have a:

- Mental health conditions
- Physical impairment or mobility difficulty



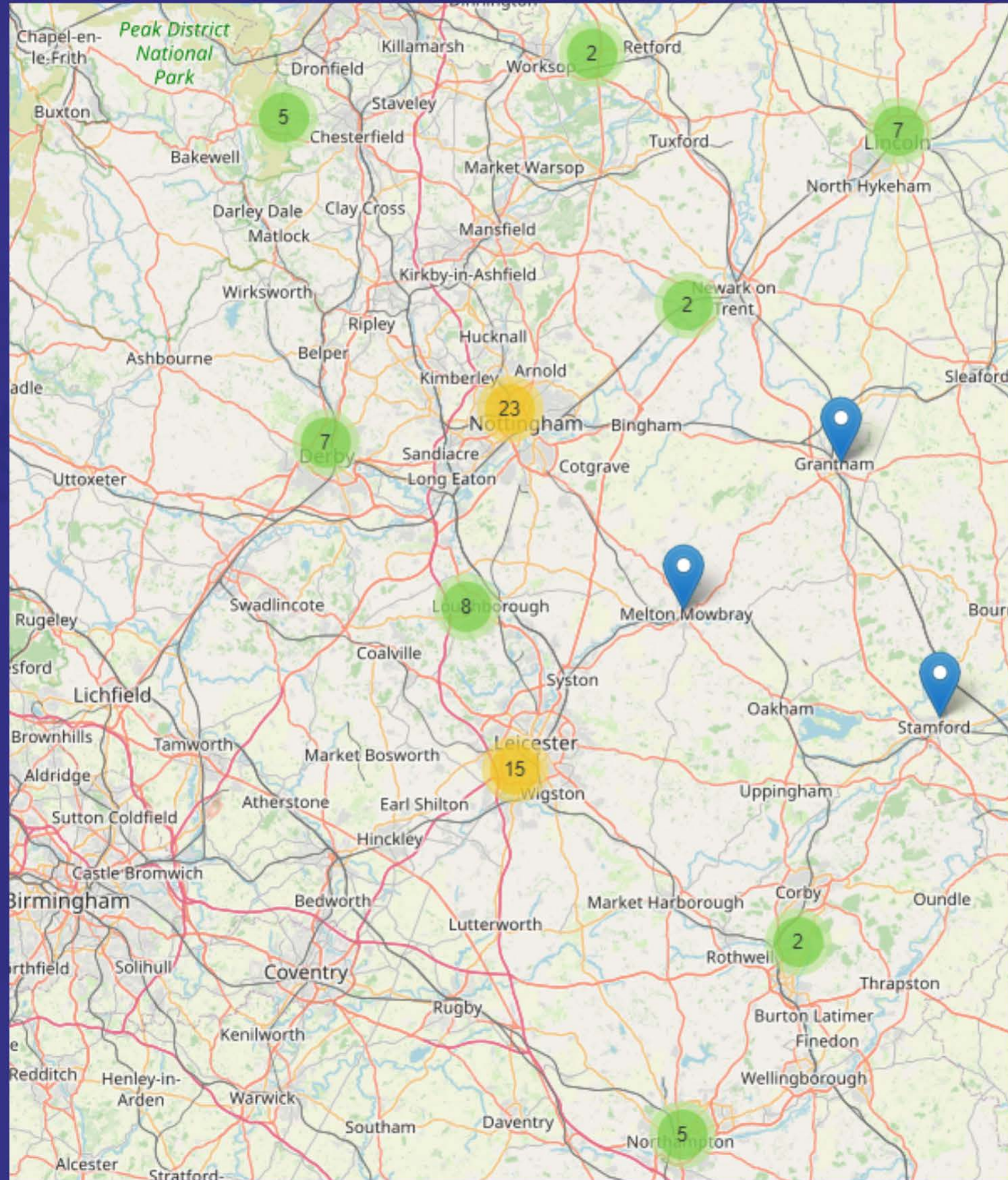
What support is available?

Help and support is available for lots of students including those who have a:

- Mental health conditions
- Physical impairment or mobility difficulty
- Speech, language or communication difficulty



Where to Begin



Where to Begin

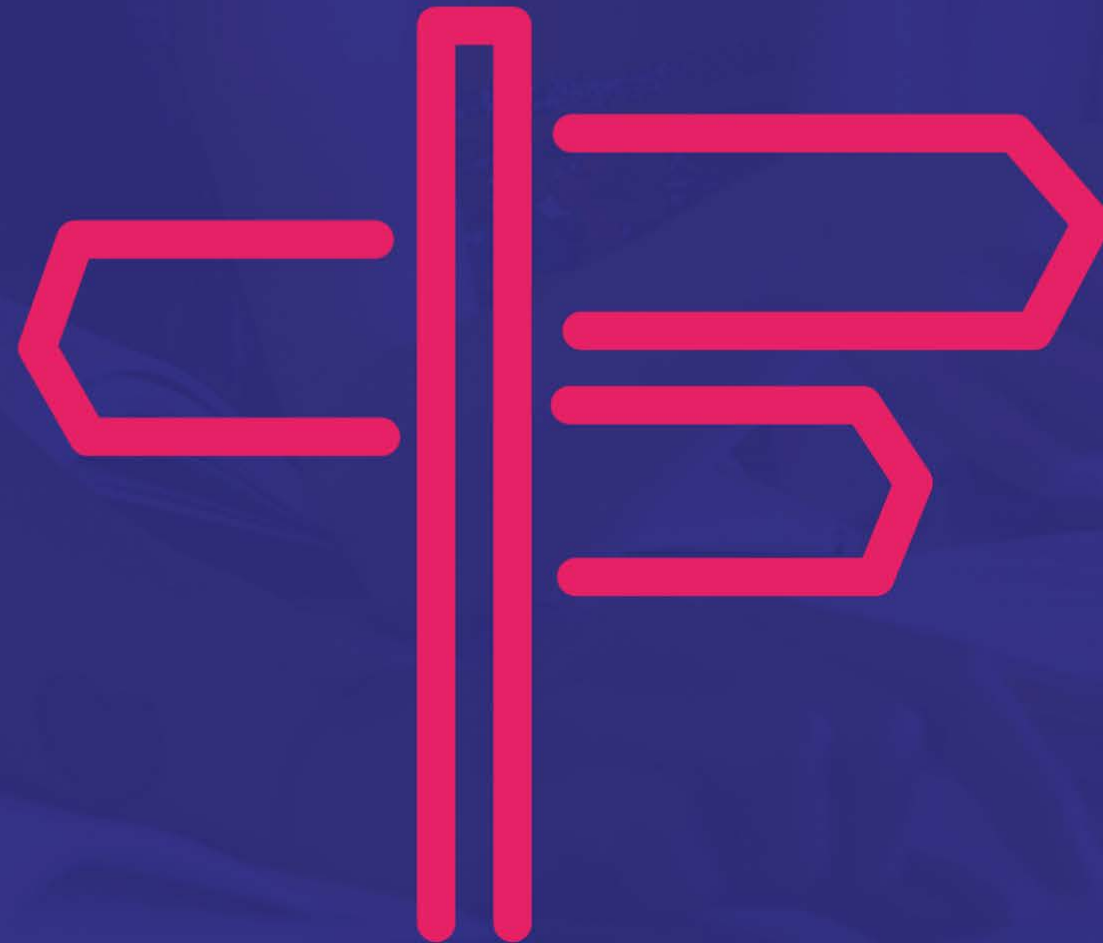
?PATHWAYS



Choosing to go to university

You'll need to think about:

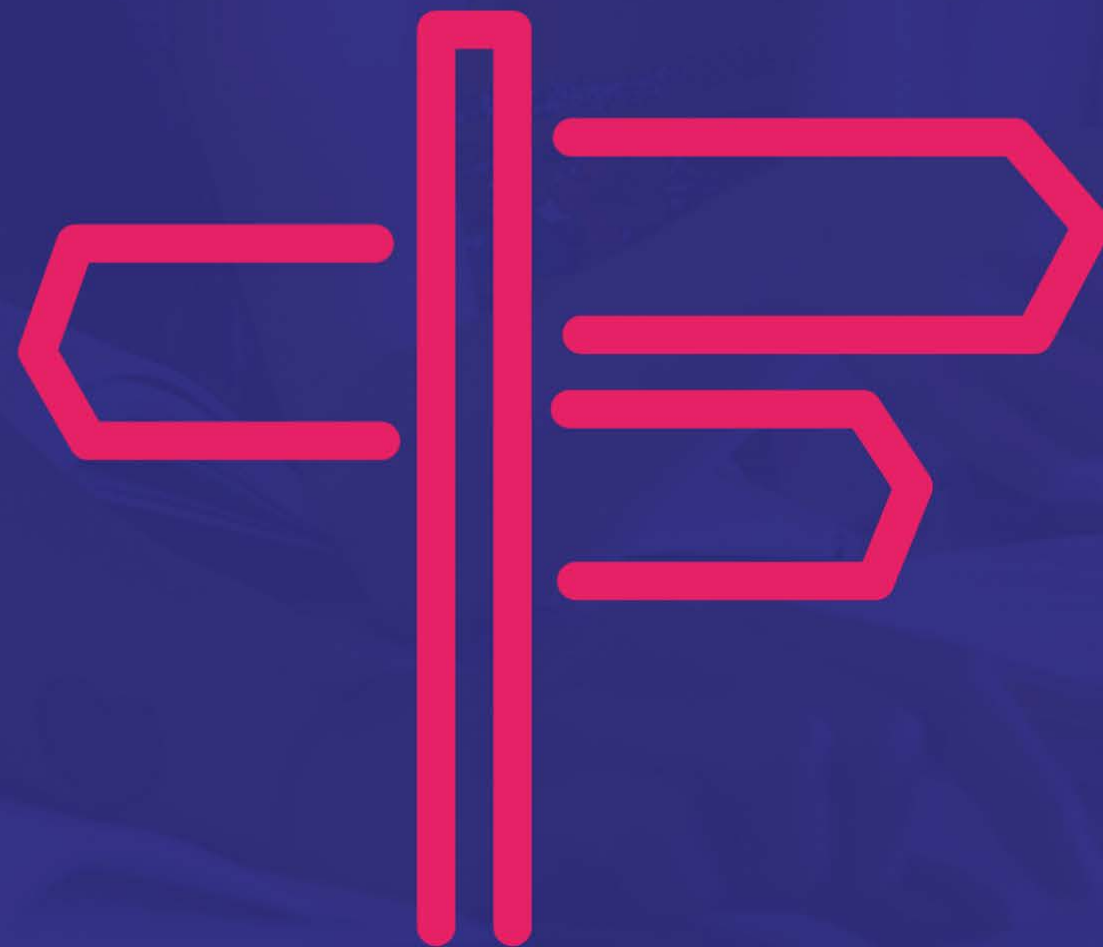
- Choice of location of University



Choosing to go to university

You'll need to think about:

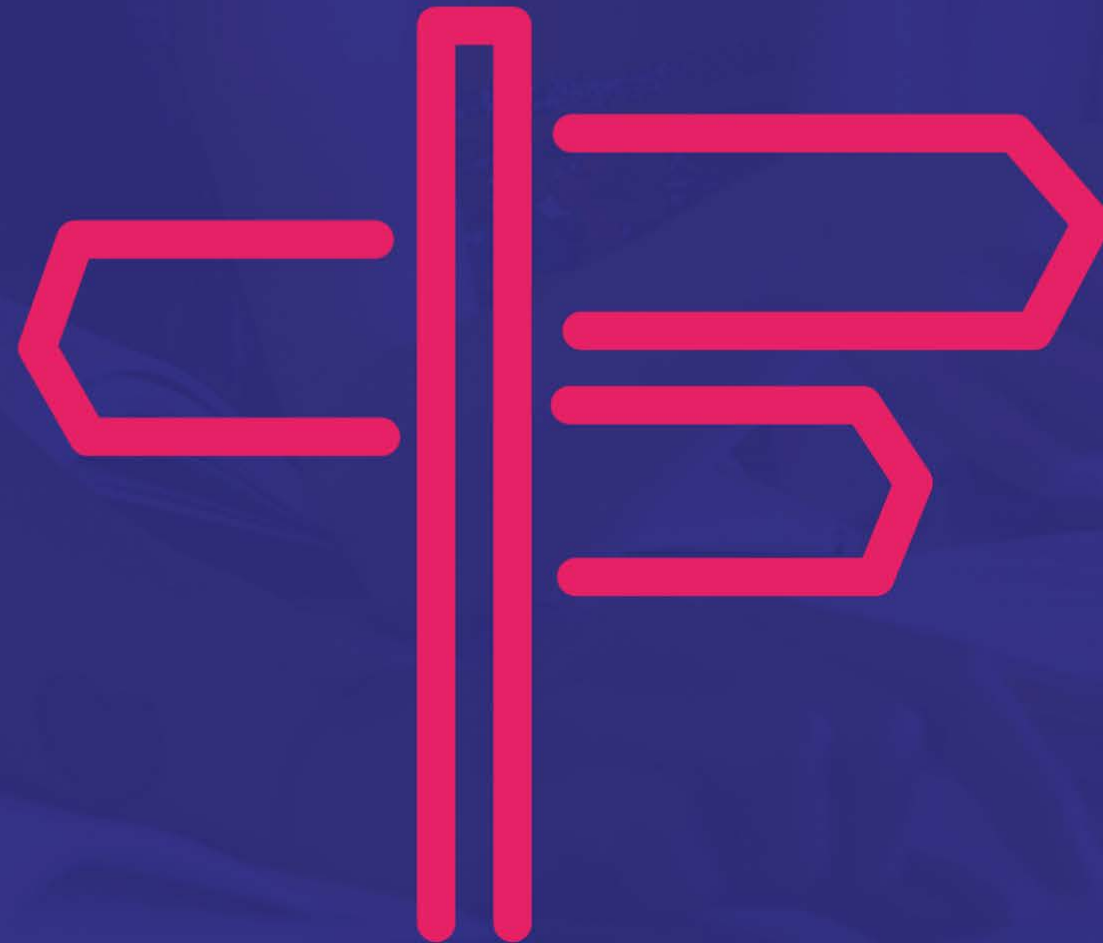
- Choice of location of University
- Type of University



Choosing to go to university

You'll need to think about:

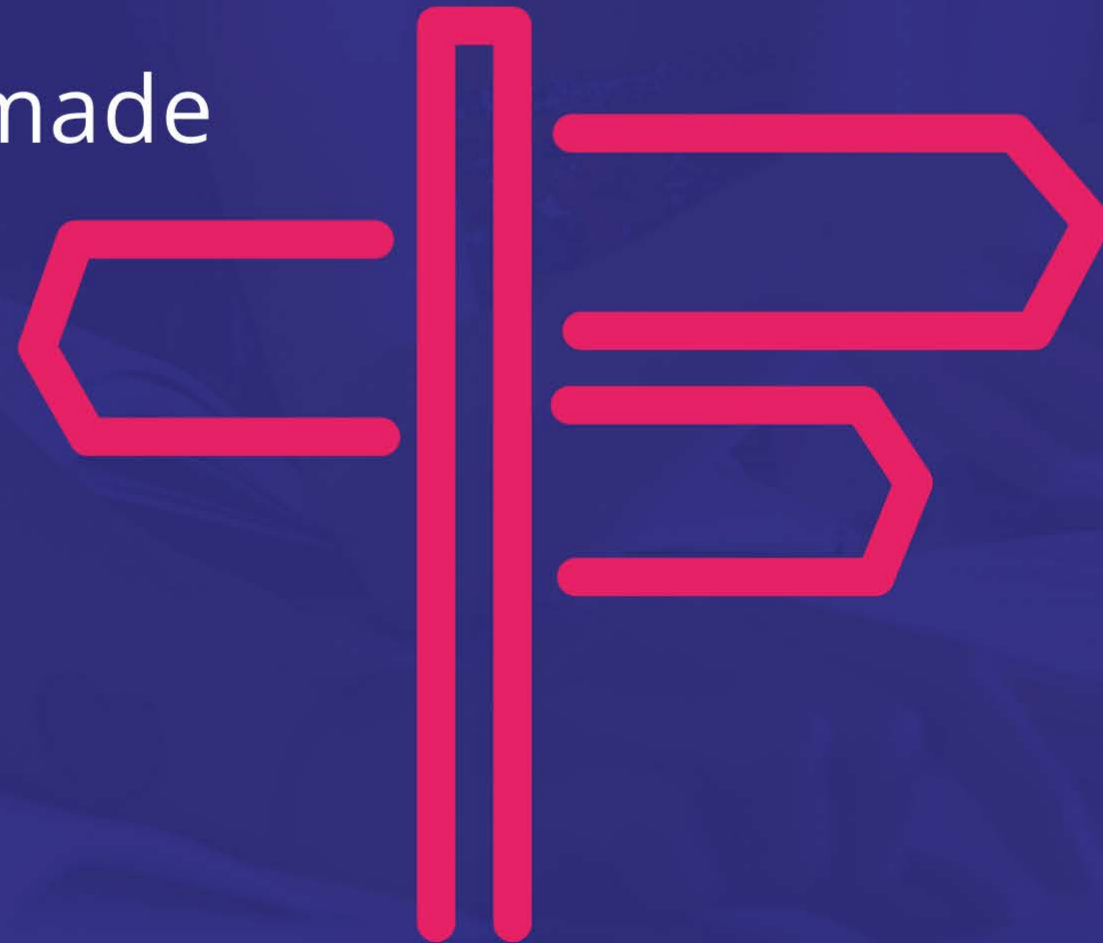
- Choice of location of University
- Type of University
- Type of course



Choosing to go to university

You'll need to think about:

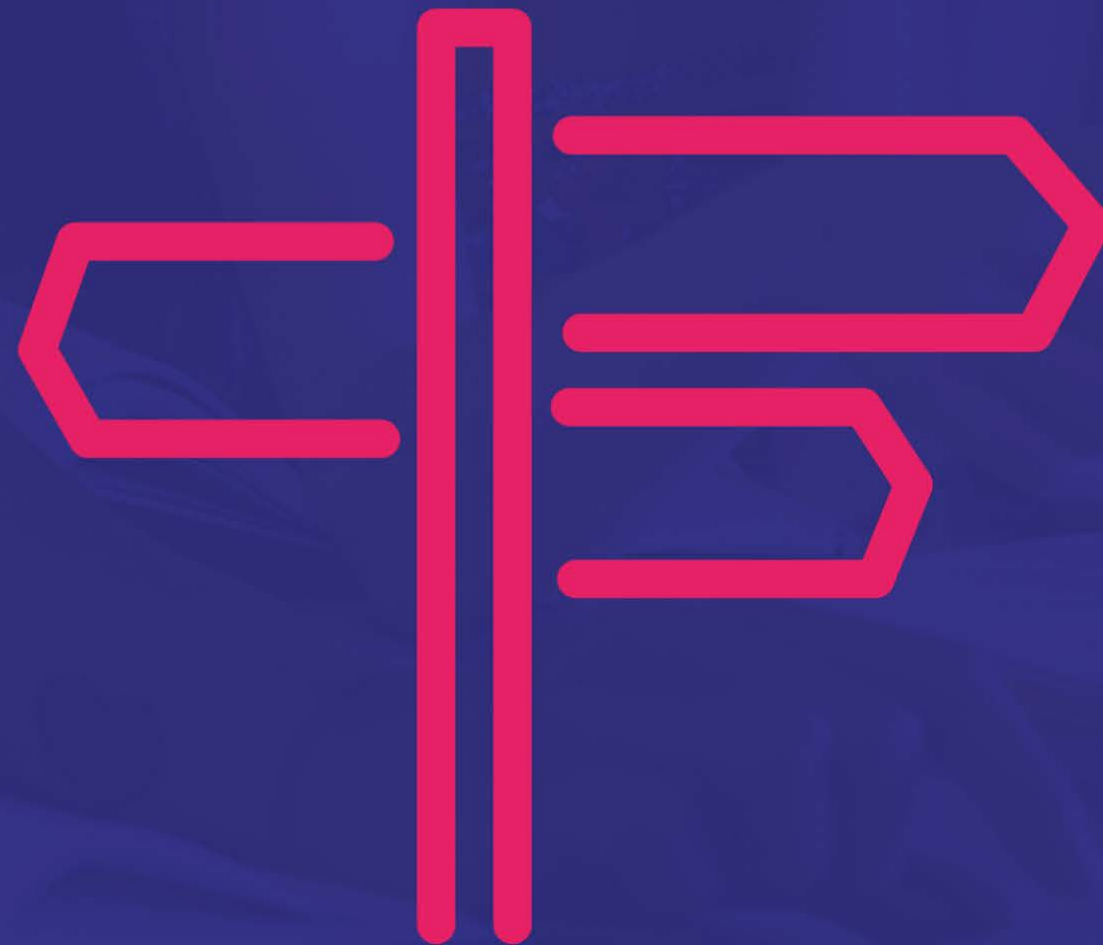
- Choice of location of University
- Type of University
- Type of course
- Personal choices made



Choosing to go to university

What will influence your decision:

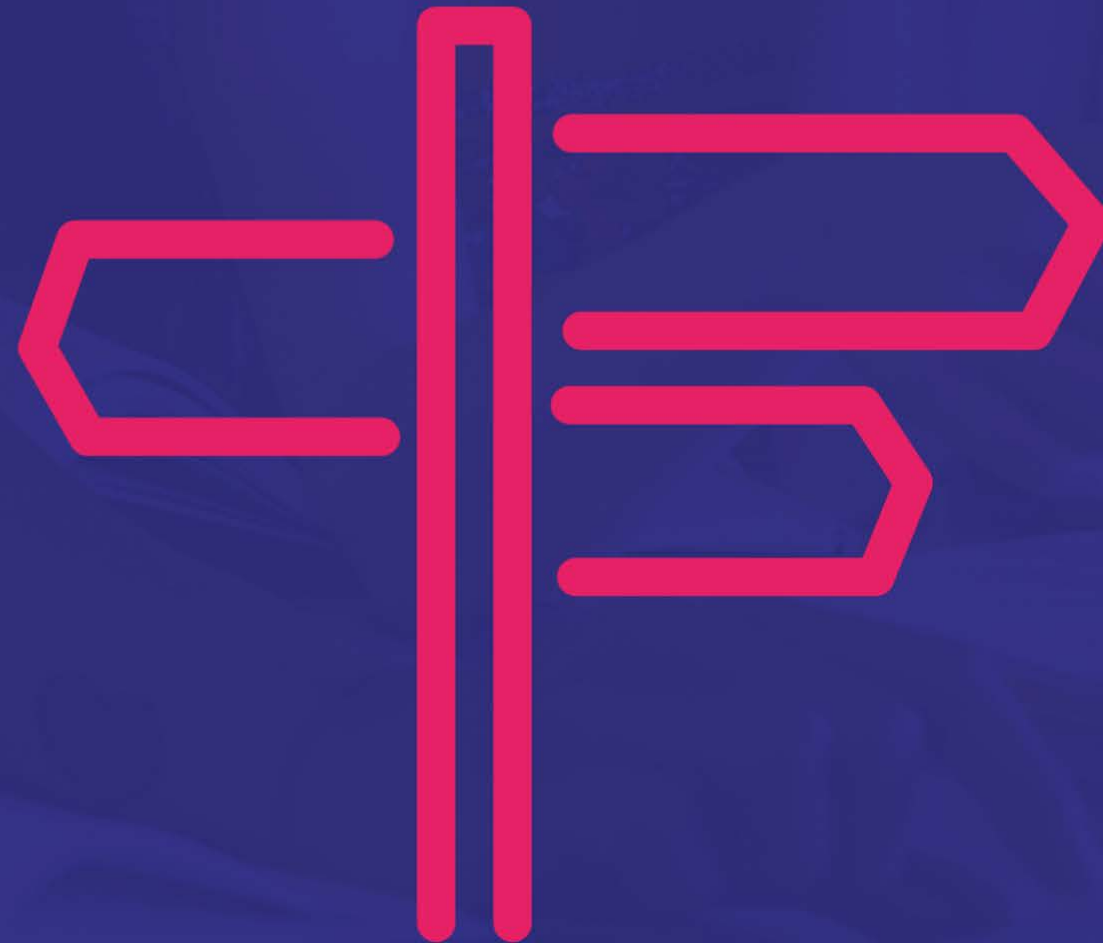
- Modules / topics covered



Choosing to go to university

What will influence your decision:

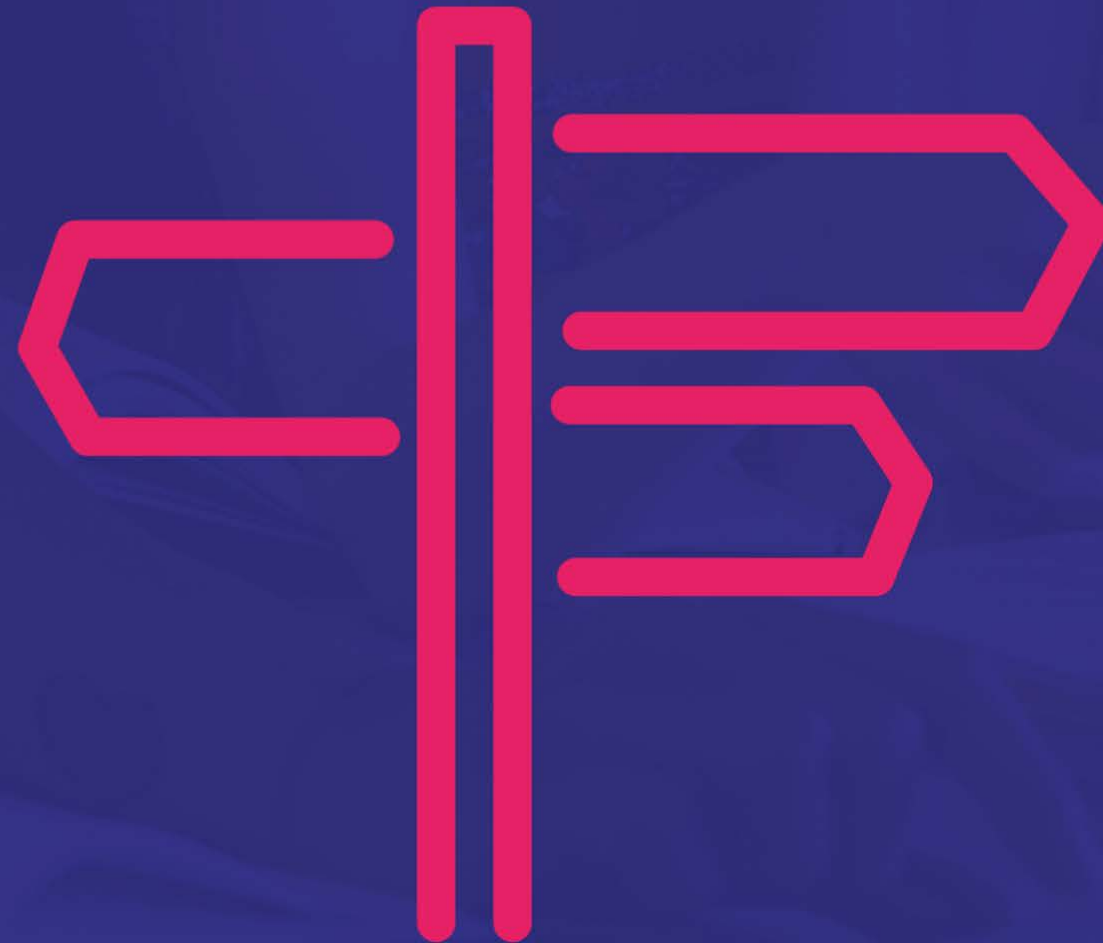
- Modules / topics covered
- Size and location of campus



Choosing to go to university

What will influence your decision:

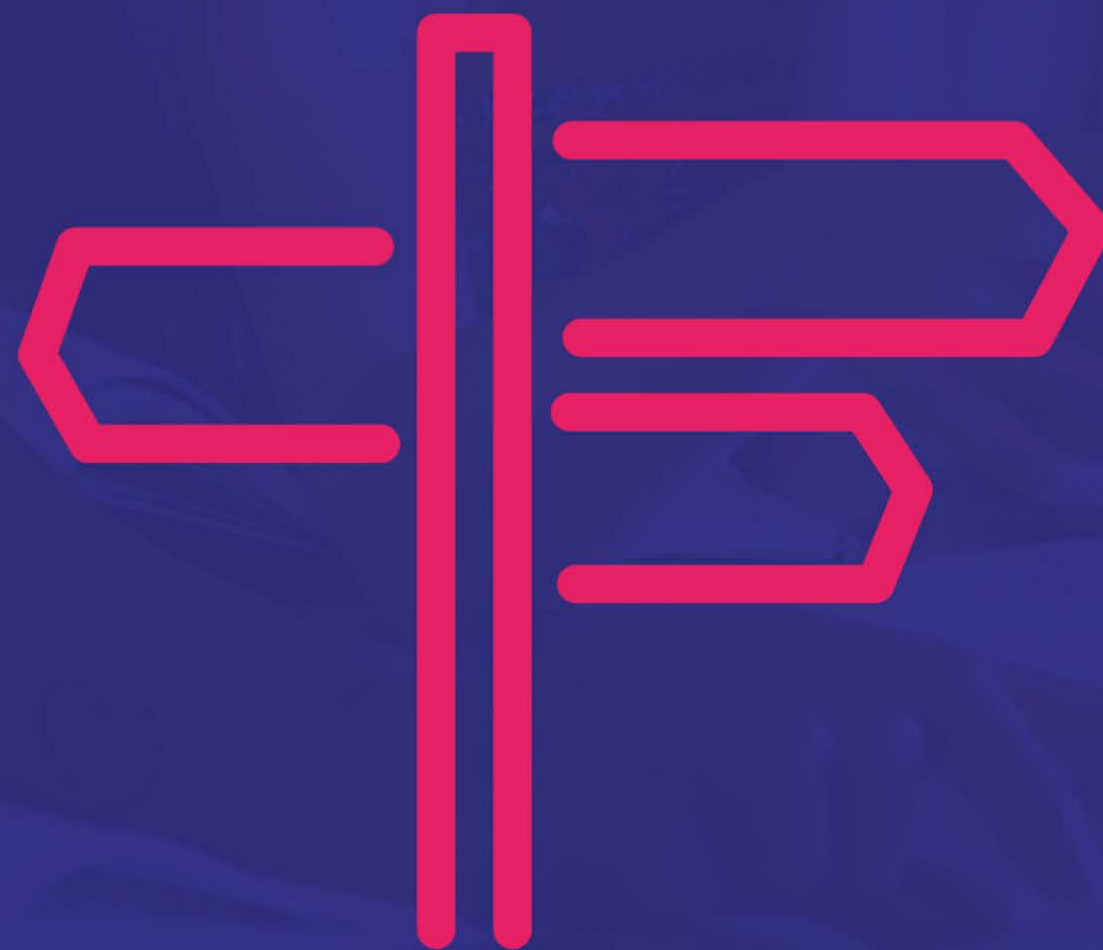
- Modules / topics covered
- Size and location of campus
- League table position



Choosing to go to university

What will influence your decision:

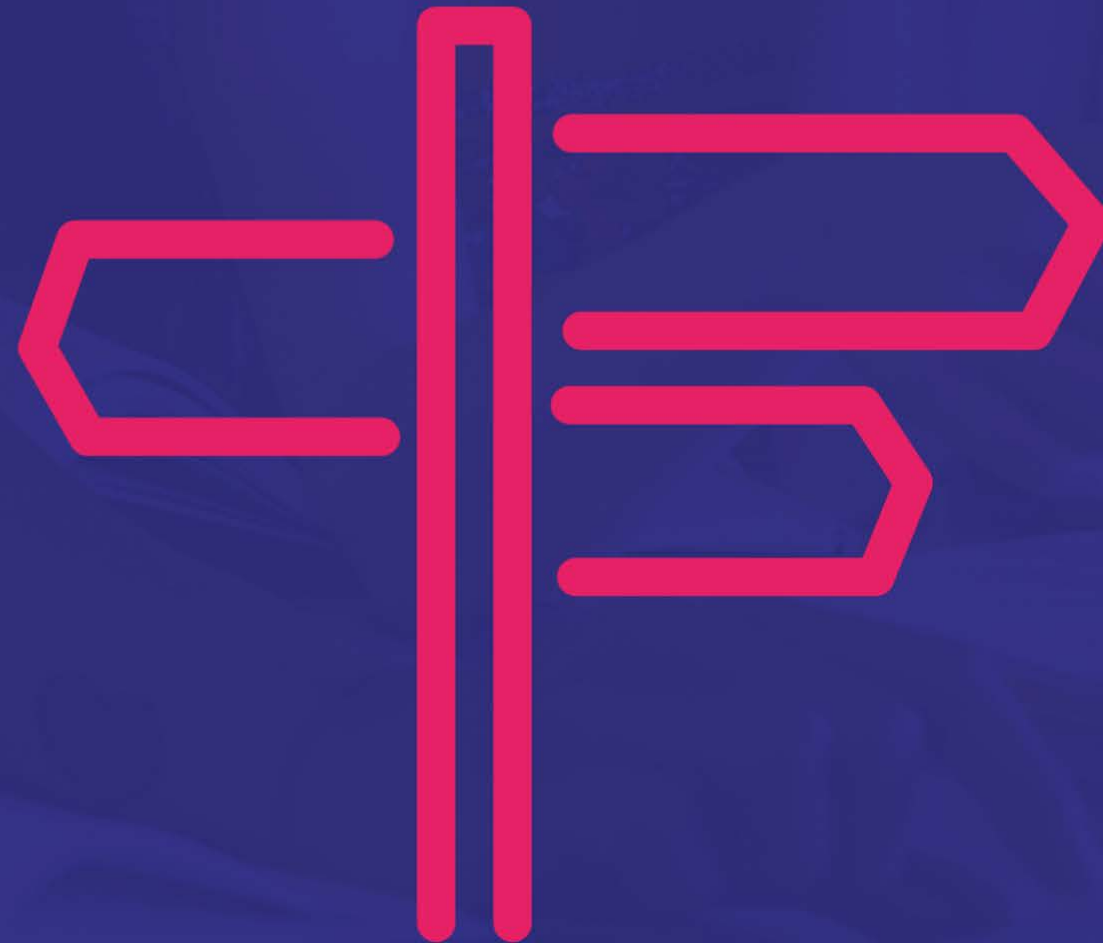
- Modules / topics covered
- Size and location of campus
- League table position
- Quality of facilities



Choosing to go to university

What will influence your decision:

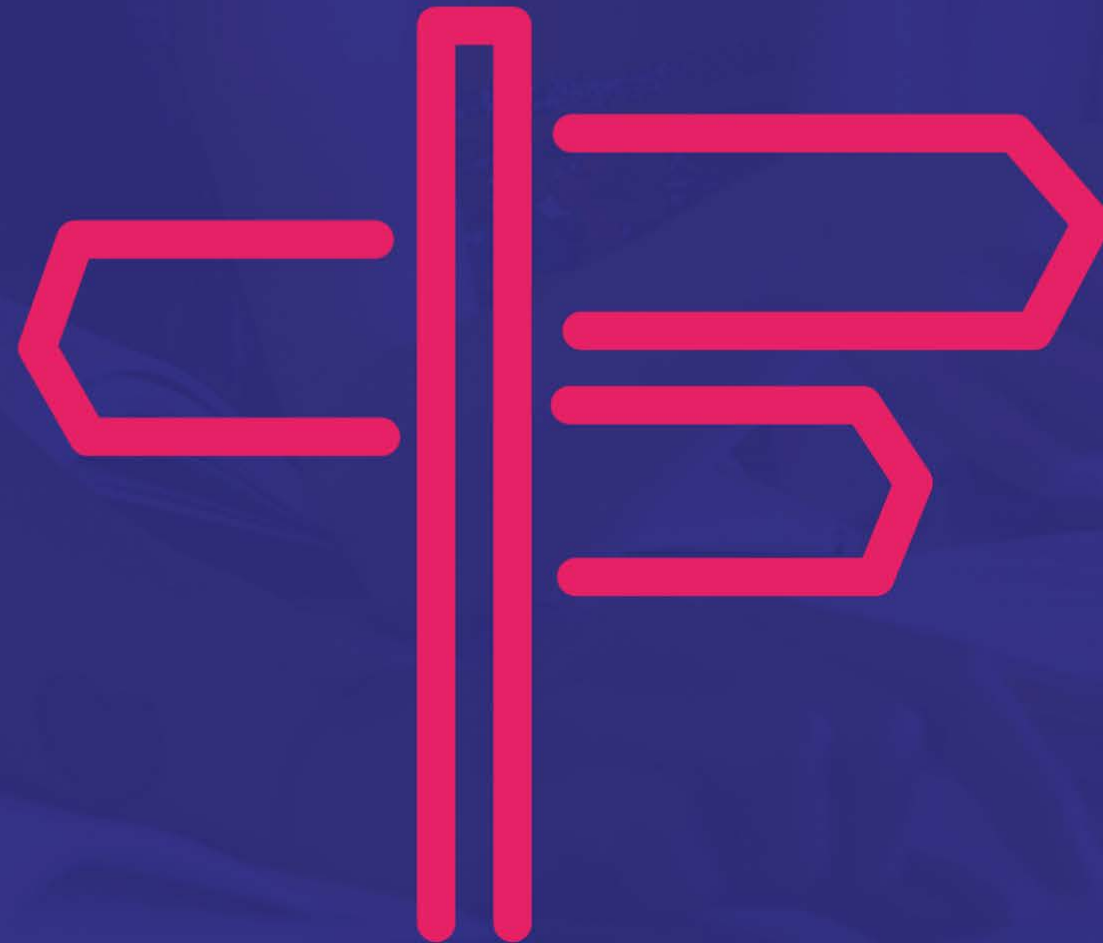
- Additional opportunities



Choosing to go to university

What will influence your decision:

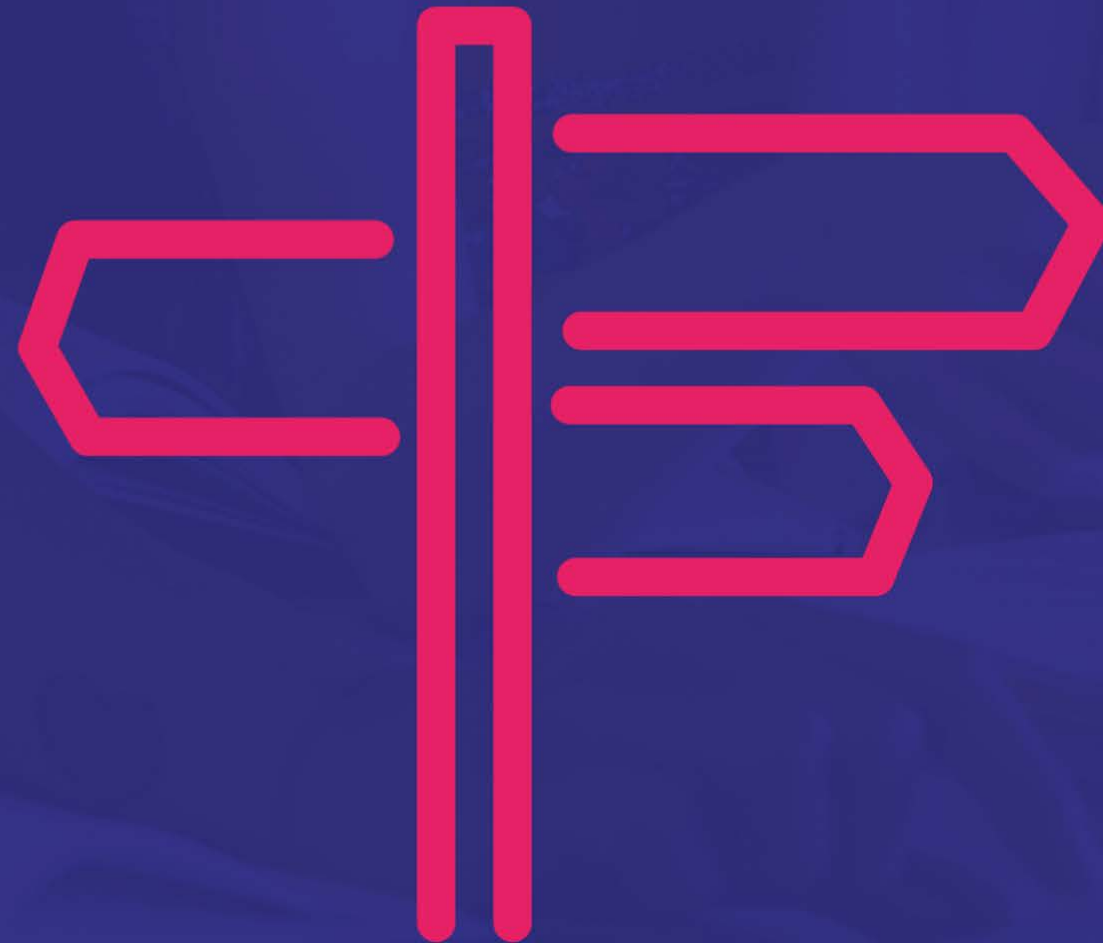
- Additional opportunities
- Clubs and societies and available



Choosing to go to university

What will influence your decision:

- Additional opportunities
- Clubs and societies and available
- Employability rates



Choosing to go to university

What will influence your decision:

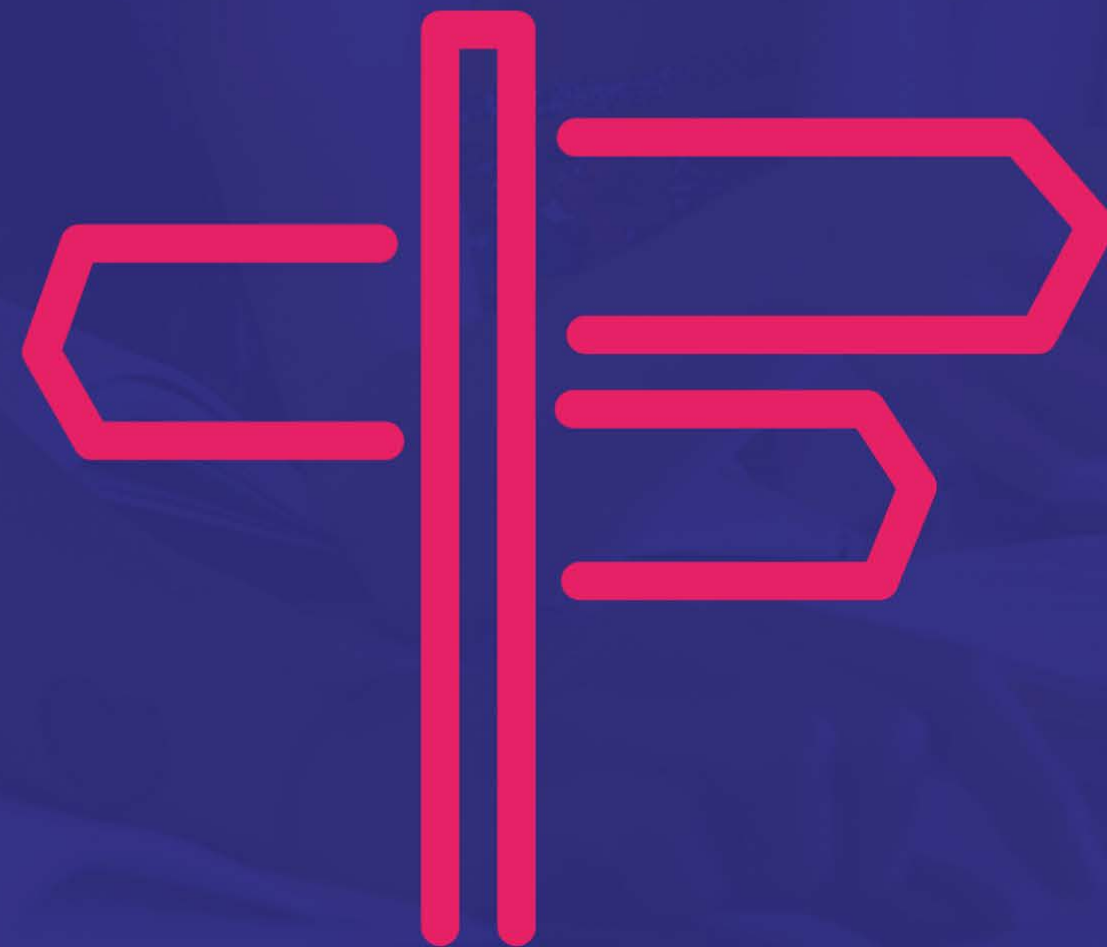
- Additional opportunities
- Clubs and societies and available
- Employability rates
- Exam to coursework ratio



Choosing to go to university

The benefits of attending university:

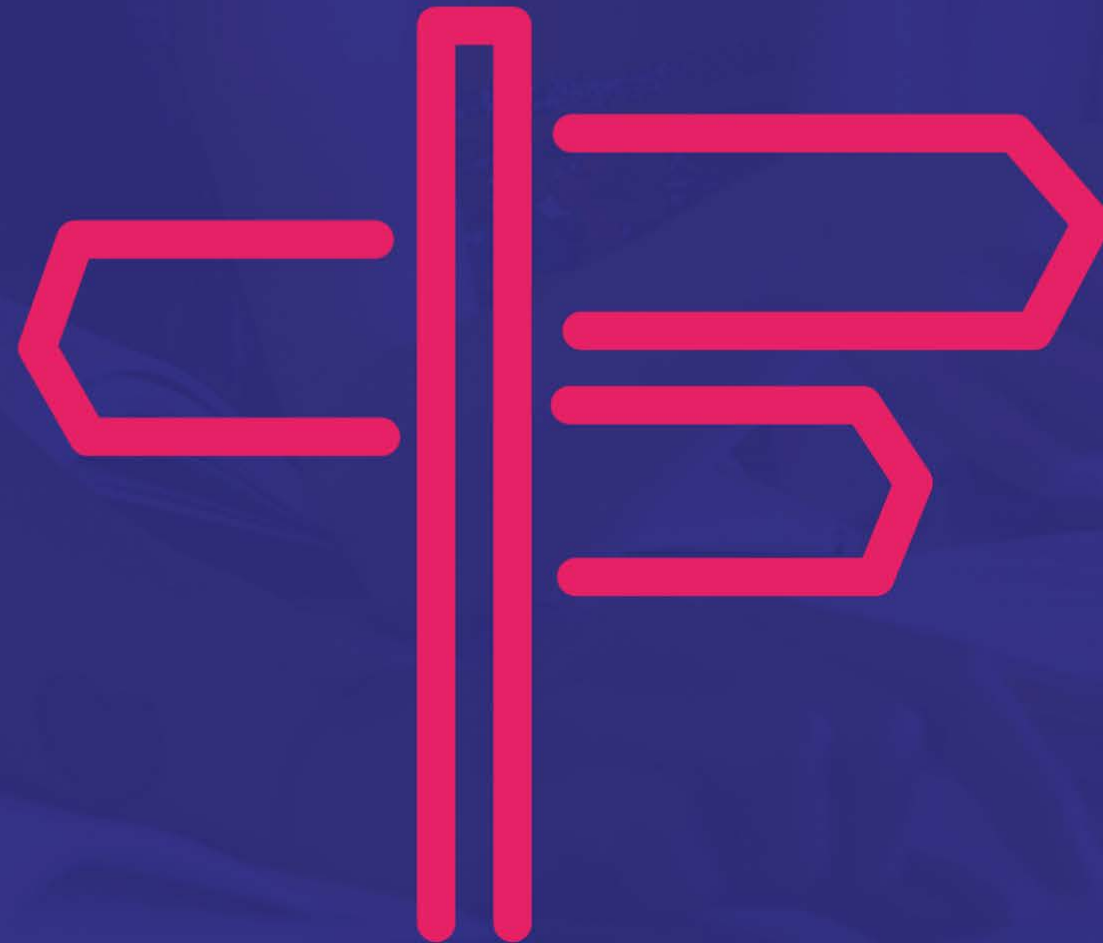
1. To gain a qualification



Choosing to go to university

The benefits of attending university:

1. To gain a qualification
2. Careers or professional opportunities



Choosing to go to university

The benefits of attending university:

1. To gain a qualification
2. Careers or professional opportunities
3. To increase earning potential and raise career 'ceiling'



Choosing to go to university

The benefits of attending university:

1. To gain a qualification
2. Careers or professional opportunities
3. To increase earning potential and raise career 'ceiling'
4. Personal development, independence and enhancing life skills



Choosing to go to university

The benefits of attending university:

1. To gain a qualification
2. Careers or professional opportunities
3. To increase earning potential and raise career 'ceiling'
4. Personal development, independence and enhancing life skills
5. To meet new people



Student Testimonial

"The disability service was a great help to me.

The staff were always friendly, helpful and willing to go above and beyond what was necessary to make my experience at Loughborough better.

The equipment loan meant that I didn't have to get behind on my work, and when it came to requesting my own equipment from student finance, the process was made quicker and easier with the help of advice about DSA.

Although studying at Loughborough can be intimidating or confusing, knowing that I had constant support if I needed it meant that I could get the most out of the experience."

Helen, English graduate at the University of Loughborough, Asperger Syndrome

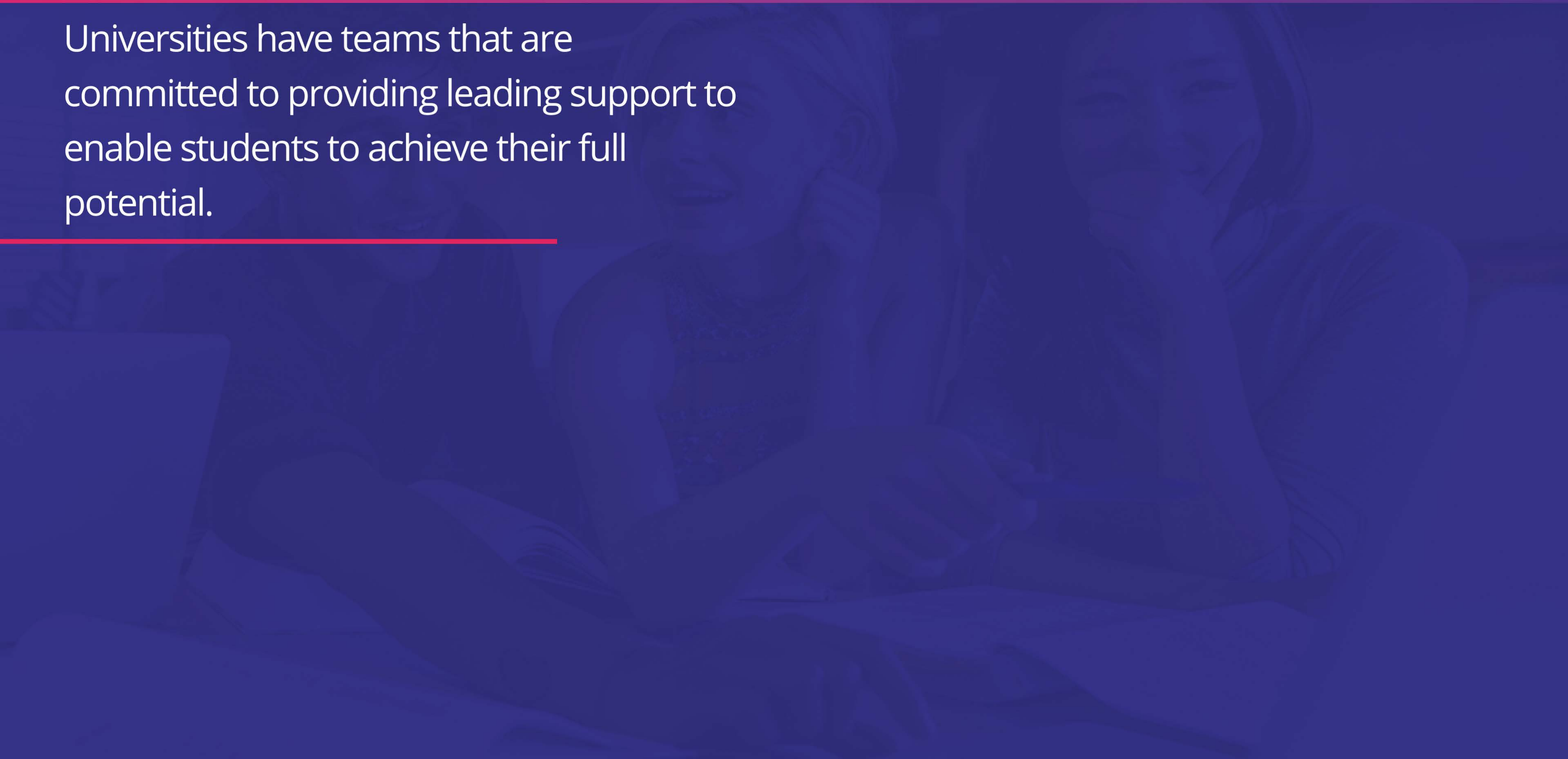
- Colleges and Universities will have a dedicated student support team to help deal with any issues you may have before, during and after your studies.

- Colleges and Universities will have a dedicated student support team to help deal with any issues you may have before, during and after your studies.
- Whether it's finding accommodation and settling in, to arranging academic support – the support teams can help point you in the right direction.

Disabled Students' Allowance



Universities have teams that are committed to providing leading support to enable students to achieve their full potential.



Disabled Students' Allowance

Universities have teams that are committed to providing leading support to enable students to achieve their full potential.

They know that each person's disability can affect them in different ways, so the support they offer is flexible and tailored to each individual.

Disabled Students' Allowance

Universities have teams that are committed to providing leading support to enable students to achieve their full potential.

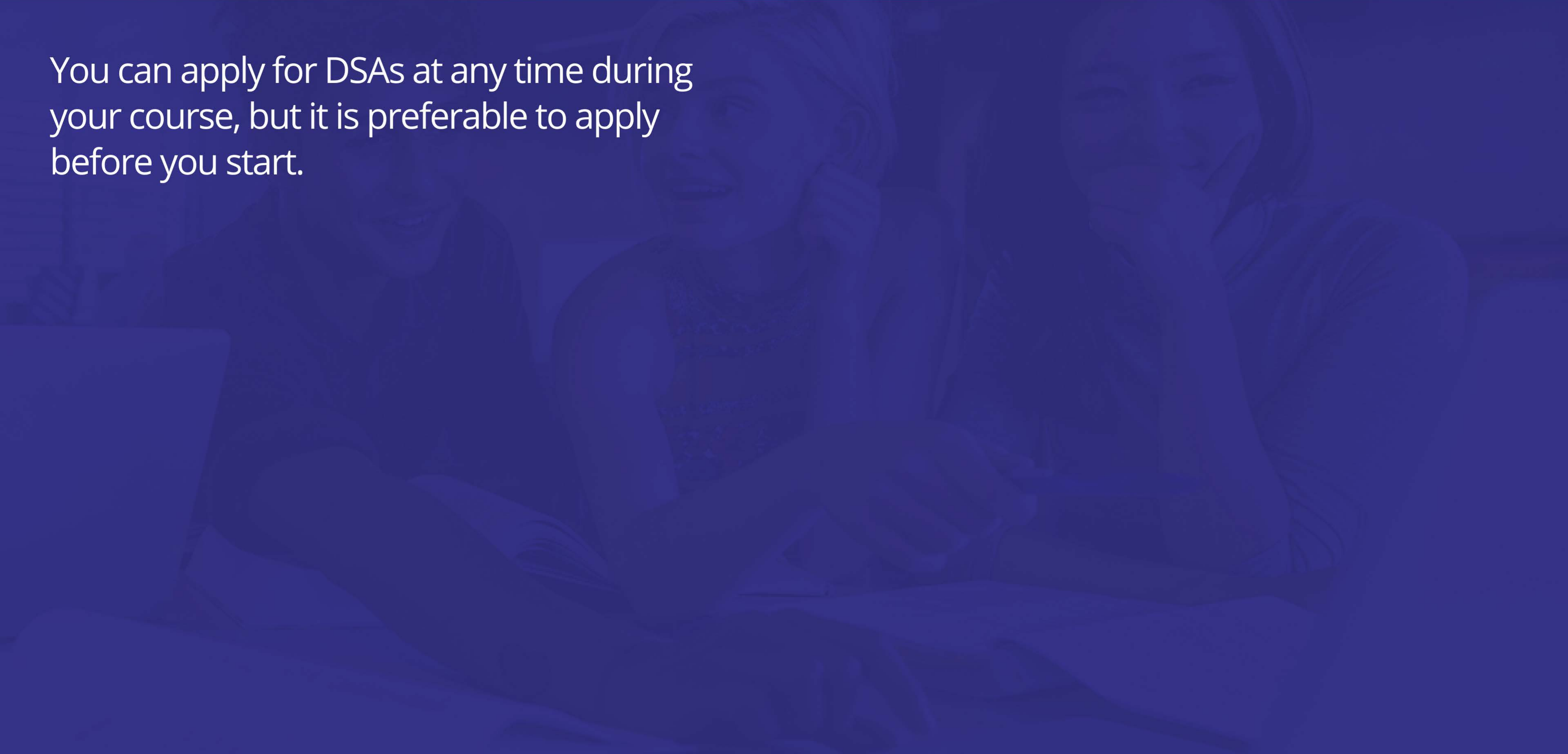
They know that each person's disability can affect them in different ways, so the support they offer is flexible and tailored to each individual.

They aim to ensure that all their students have the opportunity to fully participate in their chosen course and university experience.

How do I apply for DSAs?



You can apply for DSAs at any time during your course, but it is preferable to apply before you start.



How do I apply for DSAs?

You can apply for DSAs at any time during your course, but it is preferable to apply before you start.

As soon as student finance applications are open you can apply for DSAs. If your course starts in September this will usually be by late February or early March.

How do I apply for DSAs?

You can apply for DSAs at any time during your course, but it is preferable to apply before you start.

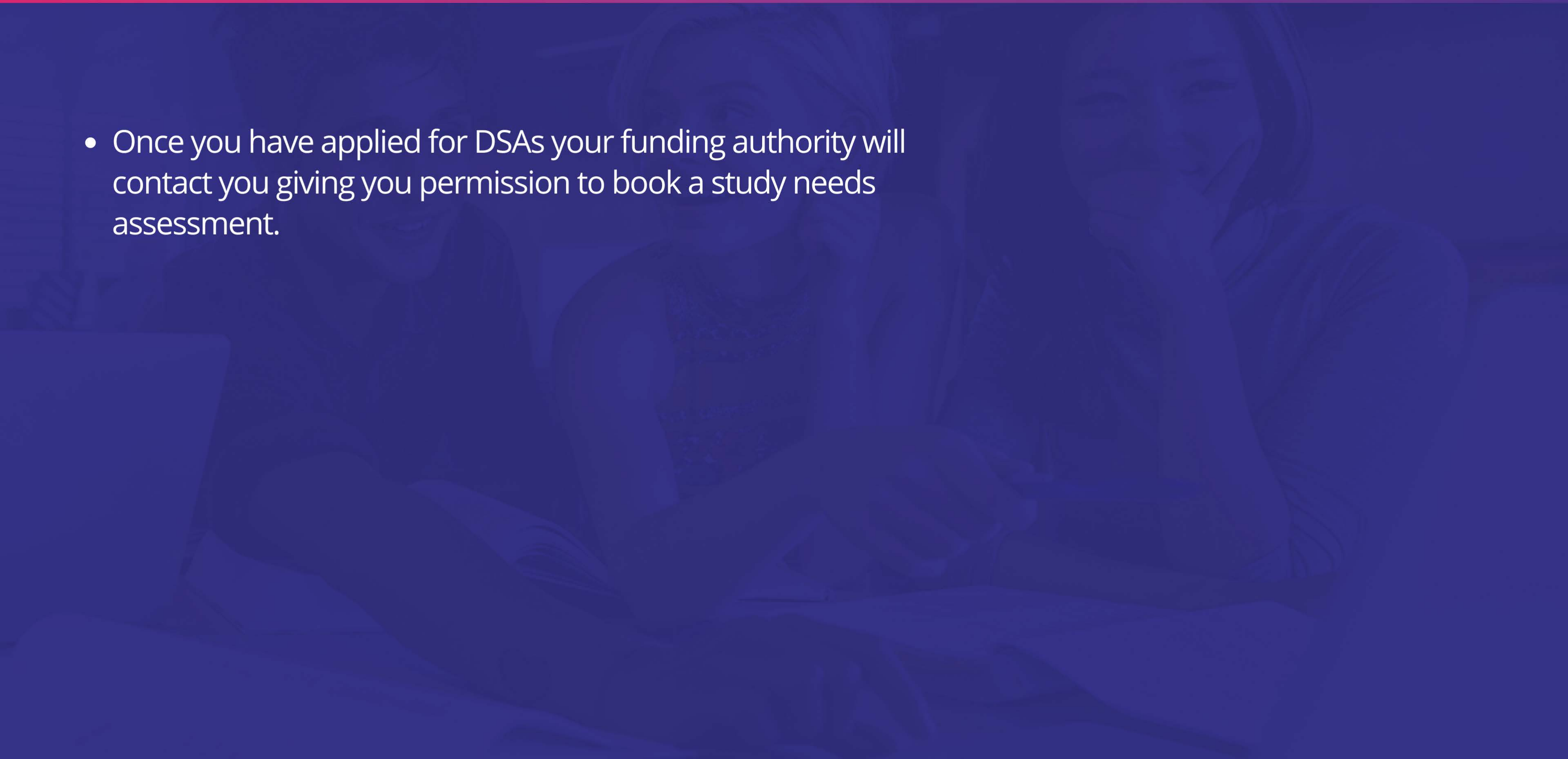
As soon as student finance applications are open you can apply for DSAs. If your course starts in September this will usually be by late February or early March.

Apply as soon as possible because the process can take a few months. You can also apply at any time after your course has begun.

What is a needs assessment and how do I book one?



- Once you have applied for DSAs your funding authority will contact you giving you permission to book a study needs assessment.



What is a needs assessment and how do I book one?

- Once you have applied for DSAs your funding authority will contact you giving you permission to book a study needs assessment.
- This is a confidential appointment with an assessor to discuss the effects of your disability on your studies.

What is a needs assessment and how do I book one?

- Once you have applied for DSAs your funding authority will contact you giving you permission to book a study needs assessment.
- This is a confidential appointment with an assessor to discuss the effects of your disability on your studies.
- You need to attend your study needs assessment at an accredited assessment centre.

What is a needs assessment and how do I book one?

- Once you have applied for DSAs your funding authority will contact you giving you permission to book a study needs assessment.
- This is a confidential appointment with an assessor to discuss the effects of your disability on your studies.
- You need to attend your study needs assessment at an accredited assessment centre.
- These are based around the country and your funding body will advise you how to locate your nearest one.

What is a needs assessment and how do I book one?



"My dyslexia wasn't diagnosed until I started my degree. I thought I wasn't ready for higher education, but I just had a learning disability. My degree is the best thing I ever did!"

Megan, Criminology at Leicester University, Dyslexia

Accommodation - Some frequently asked questions...

How do I get a fridge/sharps bin/equipment for my room?



Contact Universities early so you can discuss your requirements with a Disability Advisor. They will need medical evidence of your condition before any adjustments/equipment can be provided.

Accommodation - Some frequently asked questions...

Is an adapted room more expensive than other rooms?



Adapted en-suite rooms are charged at the same rate as non-adapted en-suite rooms.

Accommodation - Some frequently asked questions...

I have a professional carer – how does accommodation support this?


*Contact Universities early so you can discuss your circumstances with the Student Support Team.*

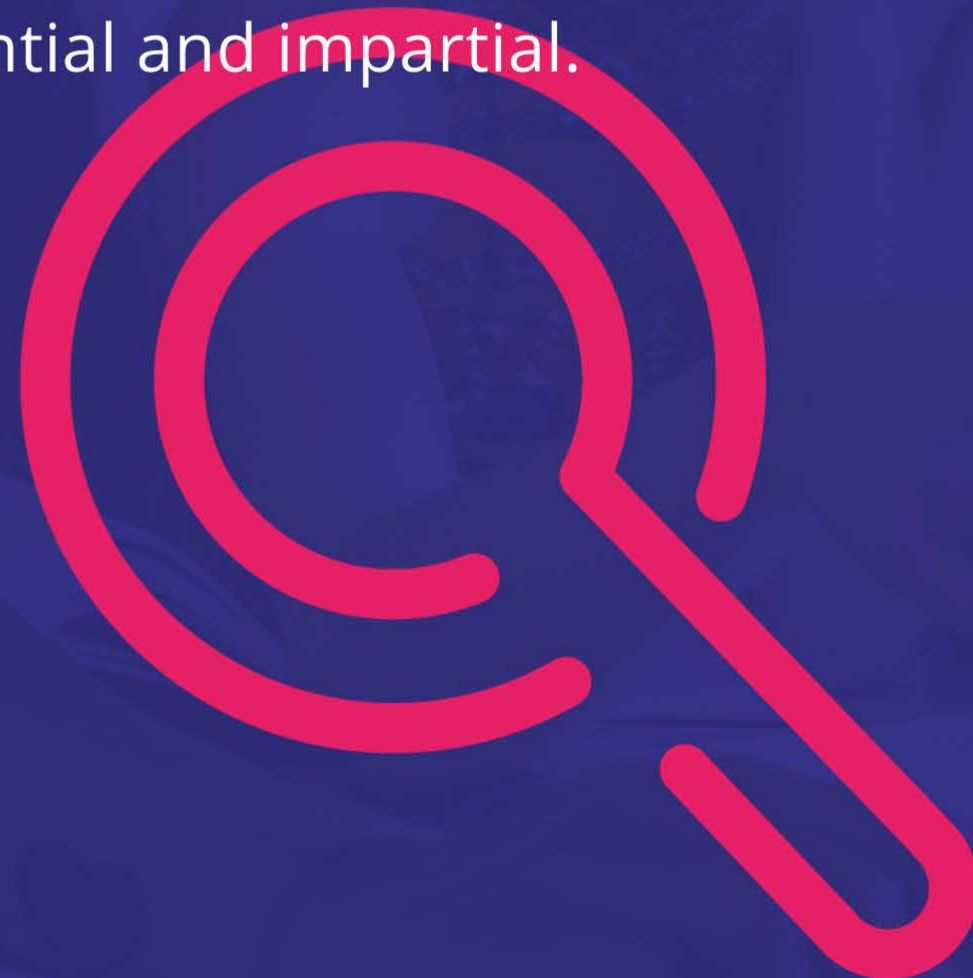
- Student Finance teams are here to provide students with advice on all aspects of money matters.



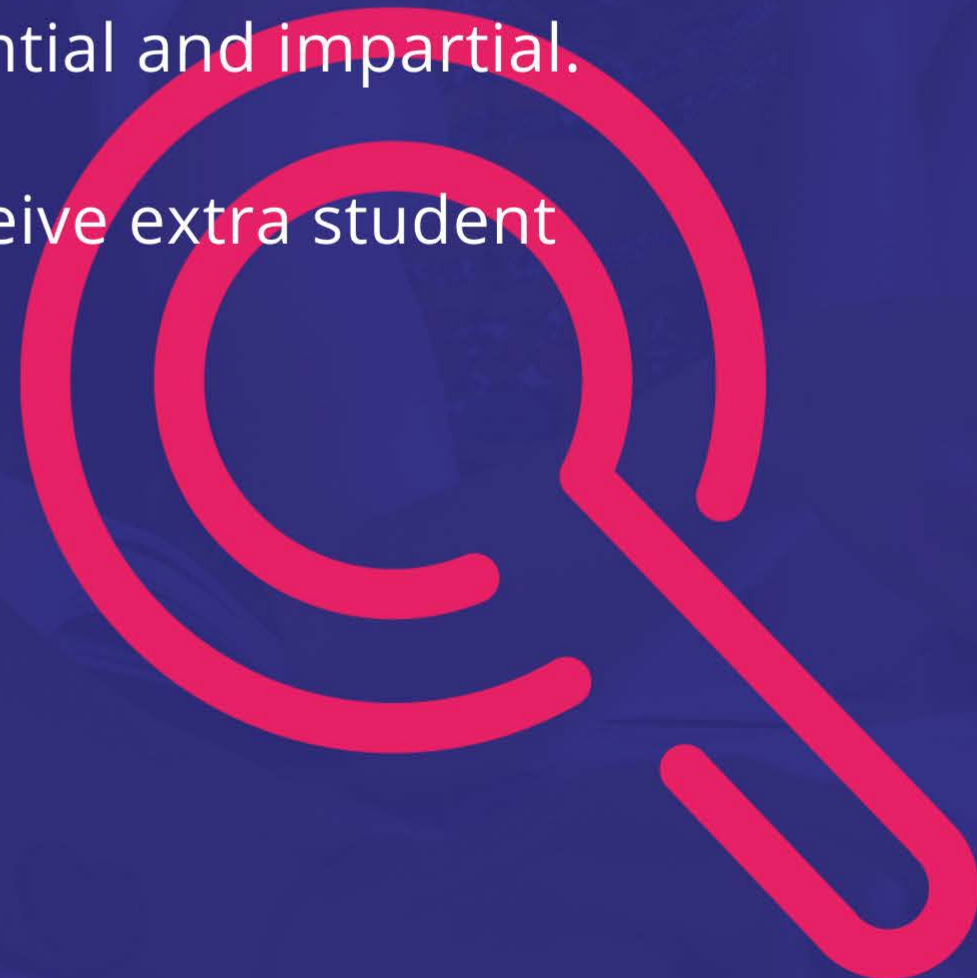
- Student Finance teams are here to provide students with advice on all aspects of money matters.
- They provide information and guidance on a range of student funding issues.

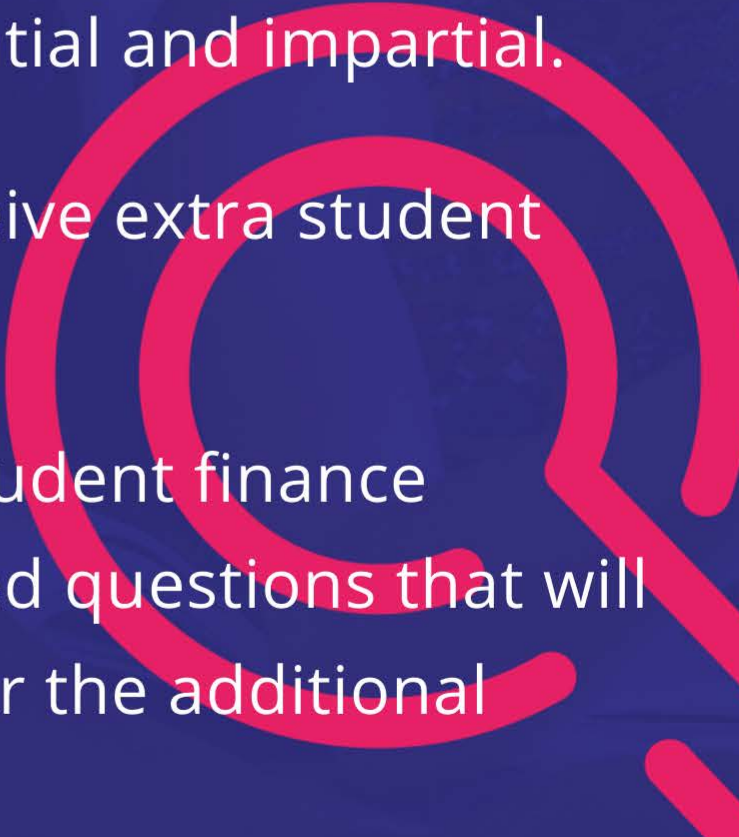


- Student Finance teams are here to provide students with advice on all aspects of money matters.
- They provide information and guidance on a range of student funding issues.
- The advice given is confidential and impartial.



- Student Finance teams are here to provide students with advice on all aspects of money matters.
- They provide information and guidance on a range of student funding issues.
- The advice given is confidential and impartial.
- In some cases you may receive extra student finance to help.

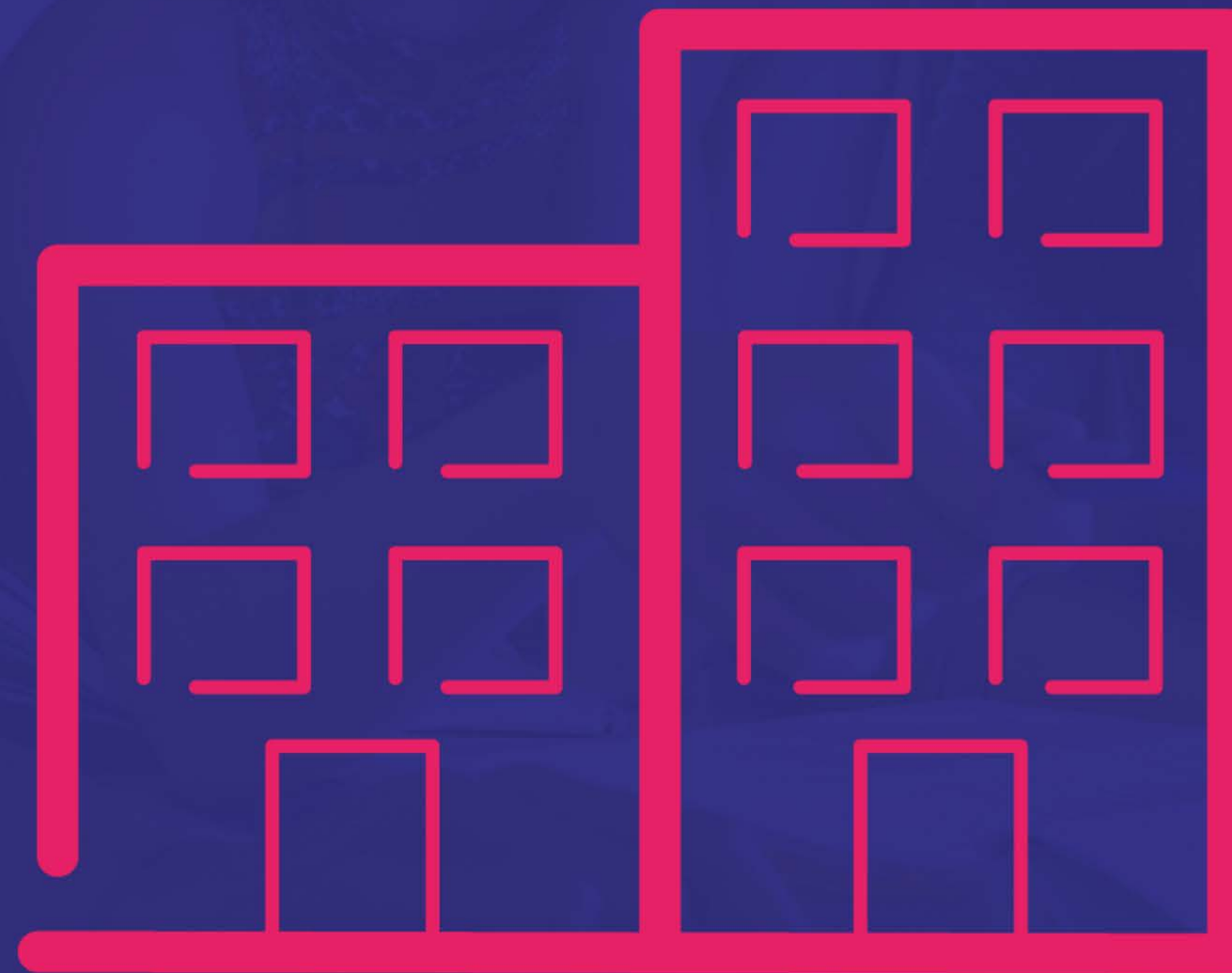


- Student Finance teams are here to provide students with advice on all aspects of money matters.
 - They provide information and guidance on a range of student funding issues.
 - The advice given is confidential and impartial.
 - In some cases you may receive extra student finance to help.
 - When you complete your student finance application, you will be asked questions that will identify if you are eligible for the additional support.
- 

Careers and Employability

Opportunities offered include:

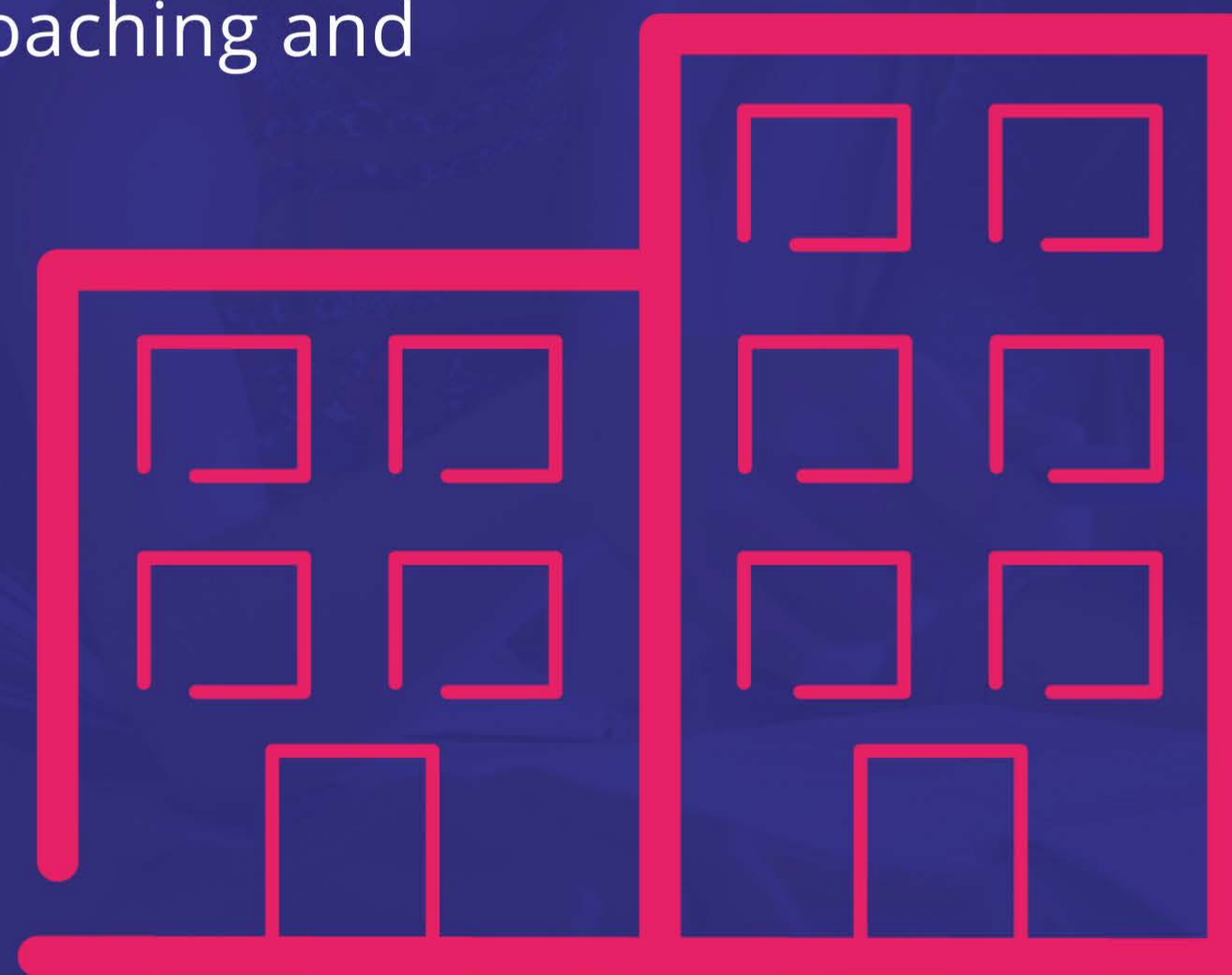
- Professional experiences such as placements and internships



Careers and Employability

Opportunities offered include:

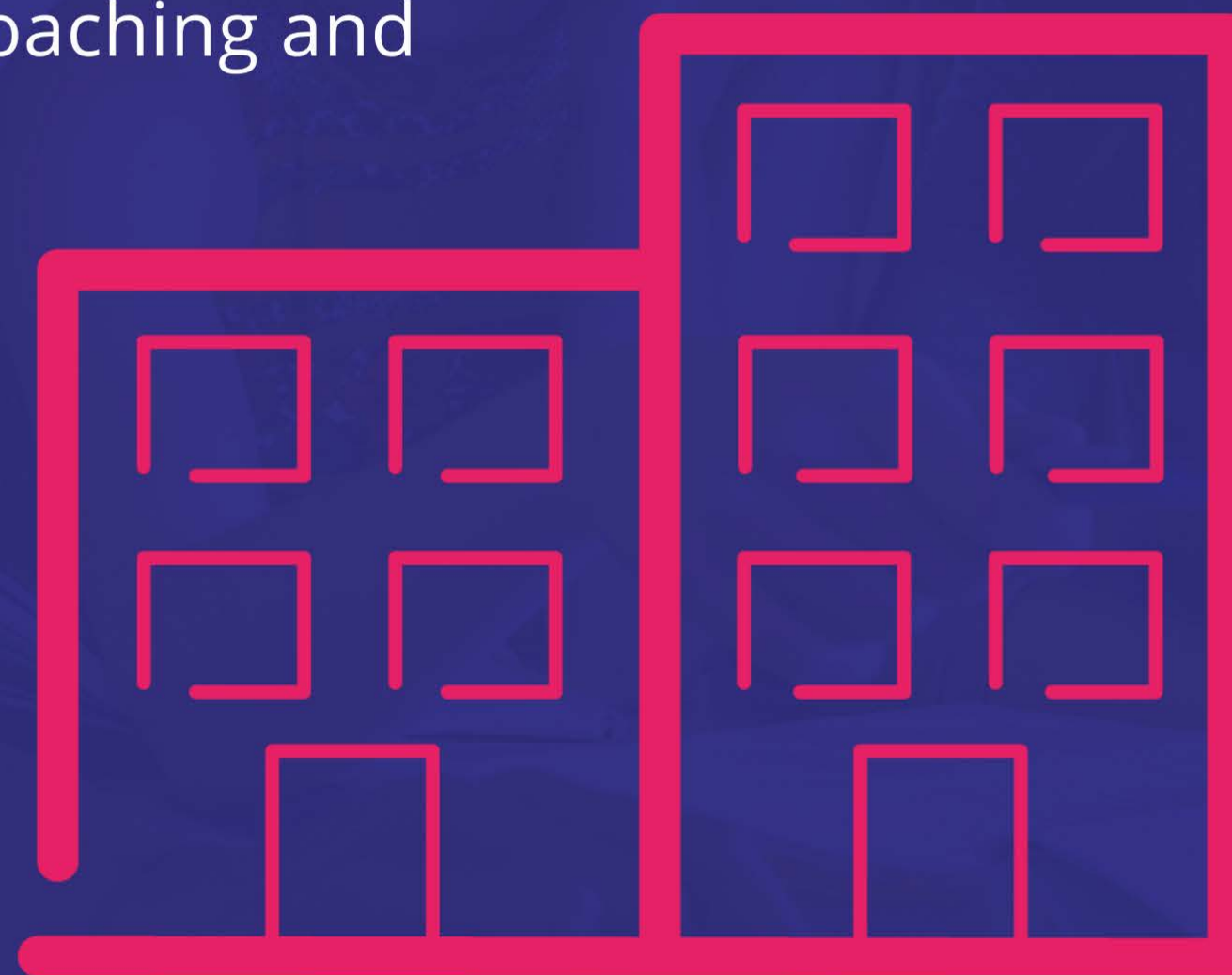
- Professional experiences such as placements and internships
- Work-readiness training, coaching and development



Careers and Employability

Opportunities offered include:

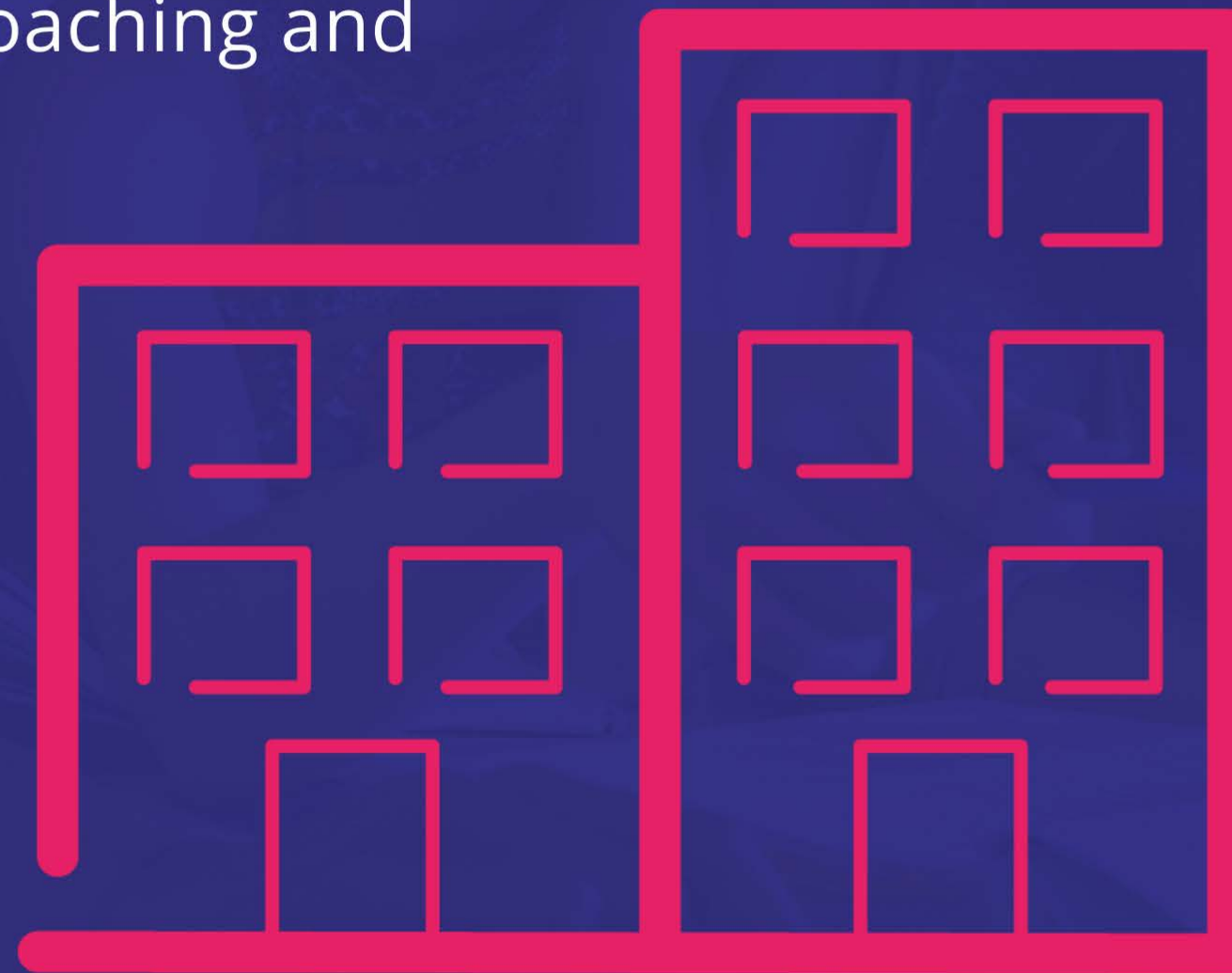
- Professional experiences such as placements and internships
- Work-readiness training, coaching and development
- Business insider visits



Careers and Employability

Opportunities offered include:

- Professional experiences such as placements and internships
- Work-readiness training, coaching and development
- Business insider visits
- Enterprise support



Careers and Employability

Opportunities offered include:

- Professional experiences such as placements and internships
- Work-readiness training, coaching and development
- Business insider visits
- Enterprise support
- Research and consultancy opportunities.



What other support can you get whilst studying at a university?

To explore everything that's available, the best thing to do is to have a full assessment of your needs as part of your DSA assessment and speak to your chosen higher education provider to set up university support.



What other support can you get whilst studying at a university?

Here's a list of examples of what support might be provided:

- One-to-one mentor support
- One-to-one tutoring
- Computing and specialist equipment
- Mind mapping software
- Scanning and proof-reading software
- Stickers
- Alternative assessment methods

What other support can you get whilst studying at a university?

Here's a list of examples of what support might be provided:

- Smaller rooms to sit exams
- Sitting exams with fewer students
- Use of a computer or assistive software
- Rest or nutrition breaks
- Exam papers in alternative format
- More appropriate language
- Support with getting around
- Personal assistants, parking permits and taxis

Being comfortable about sharing your information

- It's important to share information about your disability or diagnosis with your chosen university or college so that they can explore how to support you on the course.

Being comfortable about sharing your information

- It's important to share information about your disability or diagnosis with your chosen university or college so that they can explore how to support you on the course.
- You do not have to disclose any information that you don't want to, but the more information you share about how your impairment might affect your studies, the more opportunity your higher education institution has to support you.

What to do and when



1. Before you apply



What to do and when

1. Before you apply

2. After you apply



What to do and when

1. Before you apply

2. After you apply

3. Before you start your course



What to do and when

1. Before you apply

2. After you apply

3. Before you start your course

4. Start your course!



Questions to ask at open days, visits and events - a checklist



?PATHWAYS

Follow us on Social Media:

 pathways_em

 PathwaysEM

 Pathways EM

pathwaystohe.ac.uk



Faculties with their own support centres may be able to help with:

- Coursework hand-in and collection
- Supply of forms forms for change
- Contact details for lecturers
- Photocopying
- Locker rental

Faculties with their own support centres may be able to help with:

- Information leaflets
- General enquiries and signposting
- Exam and coursework advice
- One-to-one appointments